



HIGH PERFORMANCE 1:10 ELECTRIC TOURING CAR

SETUP SHEET

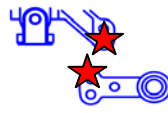
Driver: Simo Ahoniemi
 Track / City: Kissimmee
 Event: practise Date: 24.8.04

Front Suspension

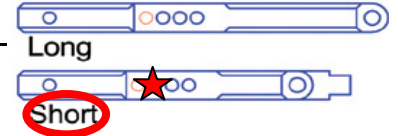
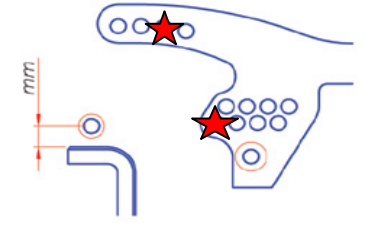
Caster block 4° Downstops 8mm Oil / Piston 50W / 2x1.3
 Kickup 1,6° Anti roll Bar 1.3mm Spring 14.5lbs
 Toe-in 0° Toe-out 0,5° Shocktower std
 Camber -1,8° Front width 190mm Steering block Aluminium
 Ride Height 4,5mm
 Wheelbase Adjustment short



Wishbone 50 graph.
 Ackermann Setting



Shock Mount & Camber Link



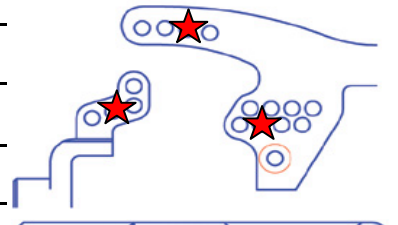
Rear Suspension

Anti-squat 0° Downstops 11mm Oil / Piston 30W / 2x1.3
 Toe-in 1,5° Anti-roll Bar 1.3mm Spring 12.5lbs
 Camber -1,8° Rear width 190mm Shocktower std
 Ride Height 5mm
 Wheelbase Adjustment mid



Upright 0°
 Wishbone 80 graph.

Shock Mount & Camber Link



Others

Front tires Take-Off CS27 Insert med Wheel TO
 Rear Tires Take-Off CS27 Insert med Wheel TO
 Comments _____

Front Drive One-way Spur 104 Pinion 25
 Motor Corally Black 8x2 Brush Modified serrated Spring Extra Hard
 Radio Sanwa M8 Servo Sanwa ERGWRX ESC Nosram DP (3,2,0)
 Body Protoform Mazda 6 Wing std

Tire Additive Tire twaker Lead Weights 50g

Track Conditions

Surface Tarmac
 Traction high
 Composition smooth
 Temp. +35C

Race Comments

Main - Finish - Qualifying pos. -

Notes _____

Weight balance

